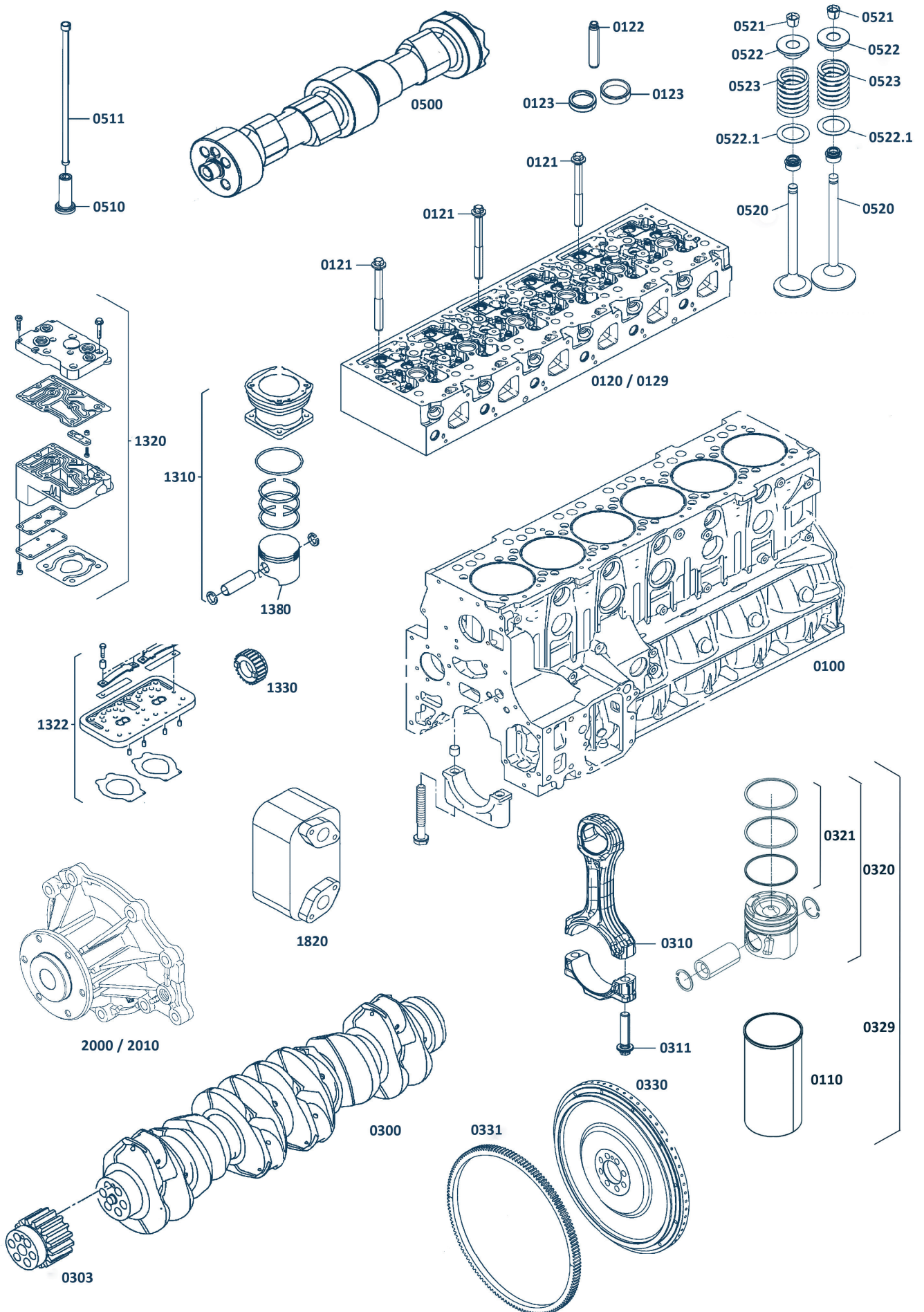


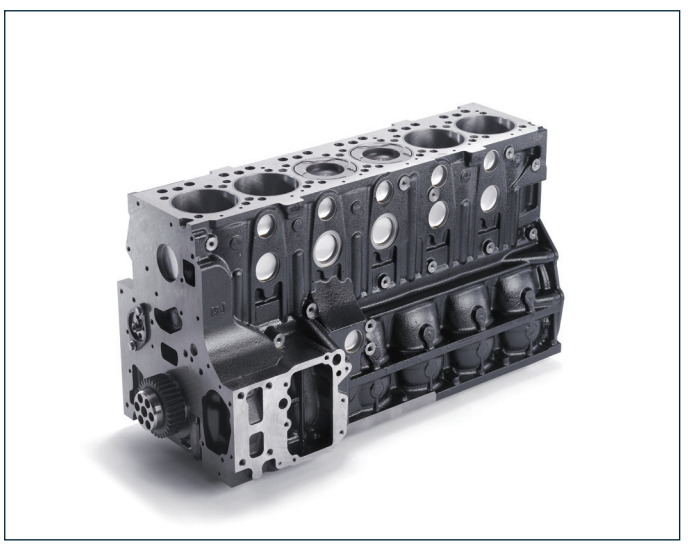
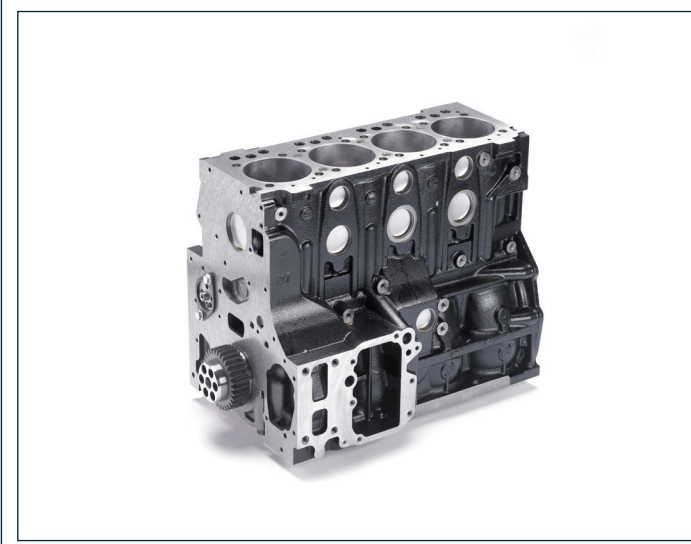
**OE Germany parts suitable for  
D0834 / D0836  
CRD engines**



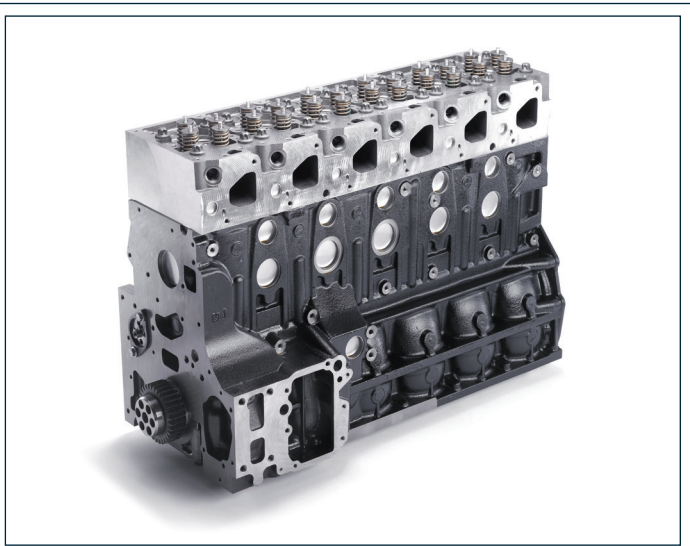
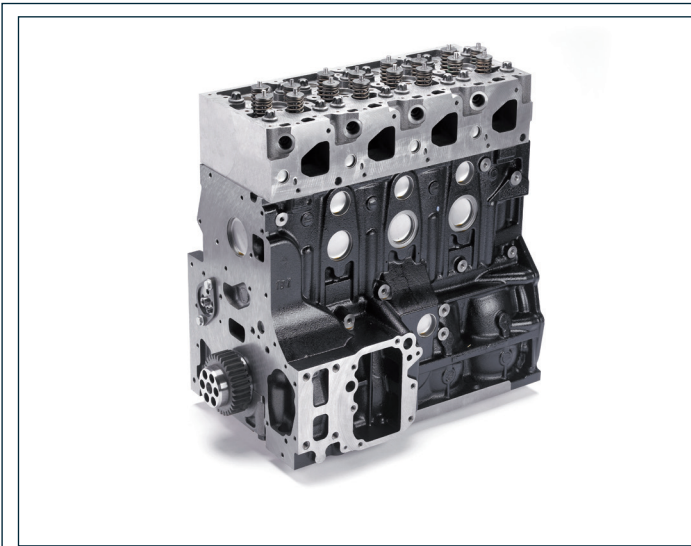
# spare parts suitable for common rail D0834 / D0836 engines



Pos. Nr. Pos. no.	Motortyp Engine type	Bemerkung Comment	OE Germany Teile-Nr. OE Germany Part no.	Referenz Reference
<b>SHORTBLOCKS / SHORTBLOCKS</b>				
Shortblock / shortblock				
0109	D0834 ...	ohne Zylinderkopf without cylinder head	02 0109 0834xx auf Anfrage / on demand	
0109	D0836 ...	ohne Zylinderkopf without cylinder head	02 0109 0836xx auf Anfrage / on demand	

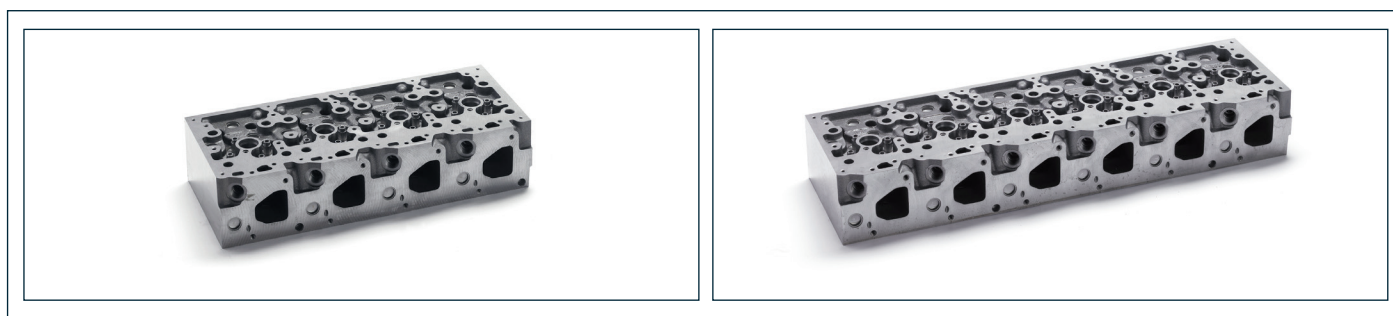


Pos. Nr. Pos. no.	Motortyp Engine type	Bemerkung Comment	OE Germany Teile-Nr. Part no.	Referenz Reference
<b>SHORTBLOCKS / SHORTBLOCKS</b>				
Shortblock / shortblock				
0109	D0834 ...	mit Zylinderkopf with cylinder head	02 0109 0834xx auf Anfrage / on demand	
0109	D0836 ...	mit Zylinderkopf with cylinder head	02 0109 0836xx auf Anfrage / on demand	

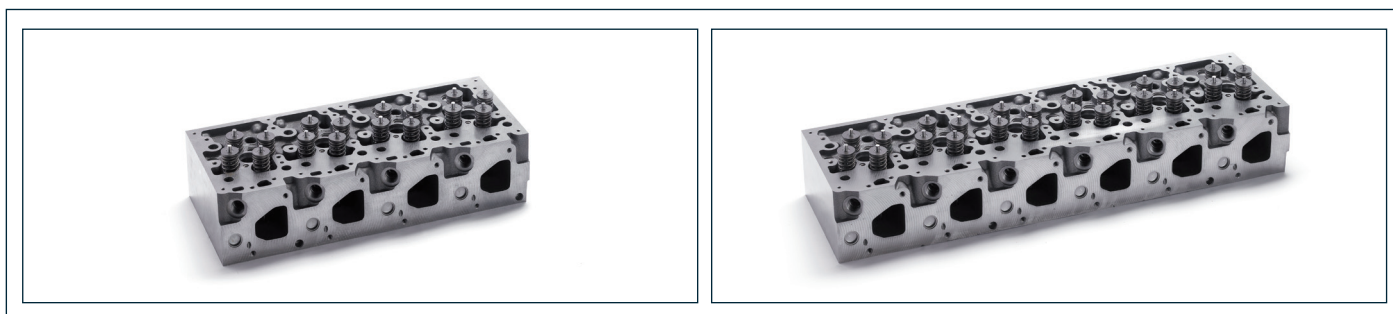


# spare parts suitable for common rail D0834 / D0836 engines

Pos. Nr. Pos. no.	Motortyp Engine type	Bemerkung Comment	OE Germany Teile-Nr. OE Germany Part no.	Referenz Reference
<b>KURBELGEHÄUSE / CRANKCASES</b>				
Kurbelgehäuse / crankcase				
0100	D0834 LF01/02/06 D0834 LFL40/42/50-55/57/60-68/70/71/75 D0834 LOF01-04 D0834 LOH40/50-53/60/61/63		02 0100 083400	51.01100.6281 51.01100.6264
0100	D0836 LF13/41/43/44 D0836 LFG50 D0836 LFL50-55/60-65/69-71 D0836 LOH10/51-58/60-68		02 0100 083600	51.01100.6266
<b>ZYLINDERKÖPFE / CYLINDER HEADS</b>				
Zylinderkopf/ cylinder head				
0120	D0834 LF01/02/06 D0834 LFL40-42/50-55/57/60-68/70/71/75 D0834 LOF01-04 D0834 LOH40/50-53/60/61/63	ohne Ventile without valves	02 0120 083400	51.03100.6397 51.03100.6274
0120	D0836 LF13/41/43/44 D0836 LFG50 D0836 LFL40/41/44/50-55/60-65/69-71 D0836 LOH10/40/41/50-58/60-68 D0836 LUH40/41/50	ohne Ventile without valves	02 0120 083600	51.03100.6273



Pos. Nr. Pos. no.	Motortyp Engine type	Bemerkung Comment	OE Germany Teile-Nr. Part no.	Referenz Reference
<b>ZYLINDERKÖPFE / CYLINDER HEADS</b>				
Zylinderkopf/ cylinder head				
0129	D0834 LF01/02/06 D0834 LFL40-42/50-55/57/60-68/70/71/75 D0834 LOF01-04 D0834 LOH40/50-53/60/61/63	mit Ventilen with valves	02 0129 083400	51.03100.6397 51.03100.6274
0129	D0836 LF13/41/43/44 D0836 LFG50 D0836 LFL40/41/44/50-55/60-65/69-71 D0836 LOH10/40/41/50-58/60-68 D0836 LUH40/41/50	mit Ventilen with valves	02 0129 083600	51.03100.6273



Pos. Nr. Pos. no.	Motortyp Engine type	Bemerkung Comment	OE Germany Teile-Nr. OE Germany Part no.	Referenz Reference
<b>ZYLINDERKÖPFE / CYLINDER HEADS</b>				
<b>Ventilfeder / valve spring</b>				
0523	D0834 LF01/02/06 D0834 LFL40-42/50-55/57/60-68/70/71/75 D0834 LOF01-04 D0834 LOH40/50-53/60/61/63 D0836 LF13/15/41/43/44 D0836 LFG50-51 D0836 LFL40/41/44/50-56/60-71/75-77 D0836 LOH10/11/40/41/50-58/60-68/70-76 D0836 LUH40/41/50	IN / EX	02 0523 080000	51.04102.0155
<b>Ventilsitzring / valve seat insert</b>				
0123	D0834 LF01/02/06 D0834 LFL40-42/50-55/57/60-68/70/71/75 D0834 LOF01-04 D0834 LOH40/50-53/60-63 D0836 LF13/15/41/43/44 D0836 LFG 50-51 D0836 LFL40/41/44/50-56/60-71/75-77 D0836 LOH10/11/40/41/50-58/60-68/70-76 D0836 LUH40/41/50	A: 40 B: 30 C: 8,15 $\alpha: 30^\circ$  IN	02 0123 083000	51.03203.0382
0123	D0834 LF01/02/06 D0834 LFL40-42/50-55/57/60-68/70/71/75 D0834 LOF01-04 D0834 LOH40/50-53/60-63 D0836 LF13/15/41/43/44 D0836 LFG 50-51 D0836 LFL40/41/44/50-56/60-71/75-77 D0836 LOH10/11/40/41/50-58/60-68/70-76 D0836 LUH40/41/50	A: 36 B: 28,5 C: 6,4 $\alpha: 45^\circ$  EX	02 0123 083001	51.03203.0386 51.03203.0409
<b>Federteller / spring cap</b>				
0522	D0834 LF01/02/06 D0834 LFL40-42/50-55/57/60-68/70/71/75 D0834 LOF01-04 D0834 LOH40/50-53/60/61/63 D0836 LF13/15/41/43/44 D0836 LFG50-51 D0836 LFL40/41/44/50-56/60-71/75-77 D0836 LOH10/11/40/41/50-58/60-68/70-76 D0836 LUH40/41/50	IN / EX	02 0522 080000	51.04103.0105 51.04103.0109
0522.1	D0834 LF01/02/06 D0834 LFL40-42/50-55/57/60-68/70/71/75 D0834 LOF01-04 D0834 LOH40/50-53/60/61/63 D0836 LF13/15/41/43/44 D0836 LFG50-51 D0836 LFL40/41/44/50-56/60-71/75-77 D0836 LOH10/11/40/41/50-58/60-68/70-76 D0836 LUH40/41/50	Scheibe washer	208342	51.90701.0233 51.90701.0236
<b>Ventilkegelstück / valve cone</b>				
0521	D0834 LF01/02/06 D0834 LFL40-42/50-55/57/60-68/70/71/75 D0834 LOF01-04 D0834 LOH40/50-53/60/61/63 D0836 LF13/15/41/43/44 D0836 LFG50-51 D0836 LFL40/41/44/50-56/60-71/75-77 D0836 LOH10/11/40/41/50-58/60-68/70-76 D0836 LUH40/41/50		02 0521 080000	51.04104.0033 51.04104.0032
<b>Ventilführung / valve guide</b>				
0122	D0834 LF01/02/06 D0834 LFL40-42/50-55/57/60-68/70/71/75 D0834 LOH40/50-53/60-63 D0836 LF13/15/41/43/44 D0836 LFL40/41/44/50-56/60-71/75-77 D0836 LFG 50-51 D0836 LOH40/41/50-58/60-68/70-76 D0836 LUH40/41/50	IN / EX  A: 13 B: 7 L: 60	02 0122 083000	51.03201.0122 51.03201.1084

# spare parts suitable for common rail D0834 / D0836 engines

Pos. Nr. Pos. no.	Motortyp Engine type	Bemerkung Comment	OE Germany Teile-Nr. OE Germany Part no.	Referenz Reference
<b>Ventil / valve</b>				
0520	D0834 LF01/02/06 D0834 LFL40/42/50-55/57/60-68/70/71/75 D0834 LOF01-04 D0834 LOH40/50-53/60/61/63 D0836 LF13/15/41/43/44 D0836 LFG50-51 D0836 LFL40/41/44/50-56/60-71/75-77 D0836 LOH10/11/40/41/50-58/60-68/70-76 D0836 LUH40/41/50	D Ø: 38 mm d Ø: 7 mm L: 141,5 mm α: 30°  3-rillig 3 grooves  IN	02 0520 083000	51.04101.0537 51.04101.0515 51.04101.0516 227 VE 30958 000
0520	D0834 LF01/02/06 D0834 LFL40/42/50-55/57/60-68/70/71/75 D0834 LOF01-04 D0834 LOH40/50-53/60/61/63 D0836 LF13/15/41/43/44 D0836 LFG50-51 D0836 LFL40/41/44/50-56/60-71/75-77 D0836 LOH10/11/40/41/50-58/60-68/70-76 D0836 LUH40/41/50	D Ø: 33,9 mm d Ø: 7 mm L: 141,5 mm α: 45°  3-rillig 3 grooves  EX	02 0520 083001	51.04101.0498 51.04101.0506 51.04101.0538 227 VA 30959 000
<b>Zylinderkopfschraube / cylinder head bolt</b>				
0121	D0834 LF01/02 D0834 LFL 40-42/50-55/57/60-65 D0834 LOF01/02 D0834 LOH40/50-53/60/61 D0836 LF13/41/43/44 D0836 LFG50 D0836 LFL01-06/40/41/44/50-55/60-65/69-71 D0836 LOH10/40/41/50-58/60-68 D0836 LUH40/41/50	D0834: 16 Stk/Zylinderkopf D0836: 24 Stk/Zylinderkopf D0834: 16 pc/cylinder head D0836: 24 pc/cylinder head M14 x 2 x 152 mm	02 0121 083600	51.90020.0465 51.90020.0383
<b>KURBELWELLEN / CRANKSHAFTS</b>				
<b>Kurbelwelle / crankshaft</b>				
0300	D0834 LF01/02/06 D0834 LFL40/42/50-55/57/60-68/70/71/75 D0834 LOF01-04 D0834 LOH40/50-53/60/61/63	ohne Lager without bearings	02 0300 083401	51.02100.6028 51.02101.0640
0309	D0834 LF01/02/06 D0834 LFL40/42/50-55/57/60-68/70/71/75 D0834 LOF01-04 D0834 LOH40/50-53/60/61/63	mit Lagern with bearings	02 0309 083401	51.02100.6028 51.02101.0640
0300	D0836 LF13/15/41/43/44 D0836 LFG50-51 D0836 LFL40/41/44/50-56/60-71/75/77 D0836 LOH10/11/40/41/50-58/60-68/70-76 E0836 LOH	ohne Lager without bearings	02 0300 083601	51.02100.6022 51.02100.9022 51.02100.6068
0309	D0836 LF13/15/41/43/44 D0836 LFG50-51 D0836 LFL40/41/44/50-56/60-71/75/77 D0836 LOH10/11/40/41/50-58/60-68/70-76 E0836 LOH	mit Lagern with bearings	02 0309 083601	51.02100.6022 51.02100.9022 51.02100.6068
0300	D0834 LOH	ohne Lager without bearings  mit Zahnrad with gear wheel	02 0300 083402	51.02100.6038 51.02100.6040
0309	D0834 LOH	mit Lagern with bearings  mit Zahnrad with gear wheel	02 0309 083402	51.02100.6038 51.02100.6040
<b>Hauptlager / main bearing</b>				
0314	D0834 ... D0836 ...	NICHT gesputtert NOT sputtered  STD	02 0314 083000	51.01113.6088 51.01113.0300 51.01113.0278 227 HL 21666 000 6945 03 0 STD
<b>Anlaufscheibensatz / thrust washer set</b>				
0305	D0834 ... D0836 ...	STD	02 0305 830001	51.01114.0223 51.01114.0222 227 AS 21665 000 2004 A02 0 STD

Pos. Nr. Pos. no.	Motortyp Engine type	Bemerkung Comment	OE Germany Teile-Nr. OE Germany Part no.	Referenz Reference
<b>Pleuellager / conrod bearing</b>				
0315	D0834 ... D0836 ...	NICHT gesputtert NOT sputtered  STD	02 0315 083000	51.02410.0692 51.02410.6679 227 PL 21660 000 6944 93 0 STD
<b>Schwungrad / flywheel</b>				
0330	D0834 LFL40-42/50-55/57/60-68/70/71/75 D0834 LOH40/50-53/60-63 D0836 LFL40/41/44		02 0330 083400	51.02301.5267 51.02301.9267
0330	D0834 LFL40-42/50-55/57/60-68/70/71/75 D0834 LOH40/50-53/60/61/63 D0836 LF13/15/41/43/44 D0836 LFG50-51 D0836 LFL40/41/44/50-56/60-71/75-77 D0836 LOH40/41/50-58/60-68/70-76		02 0330 083401	51.02301.5182 51.02301.5276 51.02301.9276
<b>Kurbelwellenrad / crankshaft timing gear</b>				
0303	D0834 LF01/02/06 D0834 LFL40-42/50-55/57/60-68/70/71/75 D0834 LOF01-04 D0834 LOH40/50-53/60/61/63 D0836 LF13/15/41/43/44 D0836 LFG50-51 D0836 LFL13/40/41/44/50-56/60-71/75-77 D0836 LOH10/11/40/41/50-58/60-68/70-76 D0836 LUH40/41/50 E0836 LOH		02 0303 080000	51.02115.0210 51.02115.0251
<b>Zahnkranz / ring gear</b>				
0331	D0224... D0226... D0824... D0826... D0834... D0836... G0826 DOH	129 Zähne 129 teeth	02 0331 082602	51.02310.0087
<b>PLEUELSTANGEN / CONNECTING RODS</b>				
<b>Pleuelstange / connecting rod</b>				
0310	D0834 LF01/02/06 D0834 LFL 50-55/57/60-68/70/71/75 D0834 LOF01-04 D0834 LOH40/50-53/60/61/63 D0836 LF13/15/41/43/44 D0836 LFG50-51/ D0836 LFL50-56/60-71/75-77 D0836 LOH10/11/51-58/60-68/70-76 E0836 LOH	D1: 44 D2: 74 L: 196  Euro 4/5  gecrackt cracked	02 0310 083401	51.02400.6068 51.02400.6045
<b>Pleuelschraube / big end bolt</b>				
0311	D0834 ... D0836 ...	M11 x 1,5 x 60 mm	02 0311 083600	51.90490.0028
<b>ZYLINDER/KOLBEN / CYLINDER/PISTONS</b>				
<b>Zylinder/Kolben / cylinder/piston</b>				
0329	D0834 LFL 50-57 D0834 LOH 40/50-53/60/61 D0836 LFG 50 D0836 LFL 50-55 D0836 LOH 51-58/60-66	Euro 4/5 besteht aus: consists of: 02 0320 083001 - 51.02500.6210 02 0110 082600 - 51.01201.0386	02 0329 083001	
<b>ZYLINDERLAUFBUCHSEN / CYLINDER LINERS</b>				
<b>Zylinderlaufbuchse / cylinder liner</b>				
0110	D0834 ... D0836 ...	A: 111,49 C: 116 L: 217 H+F: 4,04	02 0110 082600	51.01201.0386 51.01201.0318 51.01201.0378 227 WT 39

# spare parts suitable for common rail D0834 / D0836 engines

Pos. Nr. Pos. no.	Motortyp Engine type	Bemerkung Comment	OE Germany Teile-Nr. OE Germany Part no.	Referenz Reference
<b>KOLBEN / PISTONS</b>				
Kolben / pistons				
0320	D0834 LFL 50-57 D0834 LOH 40/50-53/60/61 D0836 LFG 50 D0836 LFL 50-55 D0836 LOH 51-58/60-66	Euro 4/5  passend für: suitable for: 02 0329 083001	02 0320 083001	51.02500.6210 40 217 600 87-136500-65
0320	D0834 LFL 50-57 D0834 LOH 40/50-53/60/61 D0836 LFG 50 D0836 LFL 50-55 D0836 LOH 51-58/60-66	Euro 4/5	02 0320 083002	51.02500.6227 40 217 610
0320	D0834 LFL 50-55/57/60-68/70/71/75 D0834 LOH 40/50-53/60/61 D0836 LFL 60-71/75/76/77 D0836 LOH 51-58/60-68/70-74	Euro 4/5/6	02 0320 083003	87-136500-90 51.02500.6219 40 910 600
0320	D0834 LFL/LOH D0836 LFL/LOH	Euro 5/6	02 0320 083005	07W 107 067 B
Kolbenringsatz / piston ring set				
0321	D0834... D0836...	3 mm 2,5 mm 3 mm	02 0321 083000	
<b>NOCKENWELLEN / CAMSHAFTS</b>				
Nockenwelle / camshaft				
0500	D0834 LFL01/02/06 D0834 LFL40/42/50-55/57/60-68/70/71/75 D0834 LOF01-04/40/50-53/60-63		02 0500 083402	51.04401.6391
0500	D0836 LF13/41/43/44 D0836 LFG50 D0836 LFL40/41/44/50-55/60-65/69-71 D0836 LOH10/40/41/50-58/60-68 D0836 LUH40/41/50		02 0500 083602	51.04401.6396 51.04401.0789
Ventilstößel / valve tappet				
0510	D0826 LFL03/06-10 D0834 LFL01/02 D0834 LFL40-42/50-55/57/60-65 D0834 LOF01/02 D0834 LOH 01-03/10/50-53/60/61 D0836 LF13/41/43/44 D0836 LFG50 D0836 LFL01-06/40/41/44/50-55/60-65/69-71 D0836 LOH01-04/10/40/41/50-58/60-68 D0836 LUH01/02/40/41/50		02 0510 083600	51.04301.0121 51.04301.0131
Stößelstange / push rod				
0511	D0834 LFL40-42/50-55/57/60-68/70/71/75 D0834 LOH40/50-53/60/61/63 D0836 LF13/15/41/43/44 D0836 LFG50-51 D0836 LFL40/41/44/50-56/60-71/75-77 D0836 LOH10/11/40/41/50-58/60-68/70-76 D0836 LUH40/41/50		02 0511 080001	51.04302.0062
<b>KOMPRESSOREN / COMPRESSORS</b>				
Antriebsrad / drive gear				
1330	D0834... D0836... E0836 LOH		02 1330 080000	51.54210.0205 51.54210.0164
Kolben-Zylinder Assembly / piston-cylinder kit				
1310	D0826 LUH/01-06/08/10/12/13/213 D0836 LOH01-04/40/41/50-58/60-68/70-76 D2866 LOH27-29/32-35/37-40/50-51 E0836 LOH	Ø 88 mm  luftgekühlt air-cooled	02 1310 080000	51.54119.6003 51.54105.6019



Pos. Nr. Pos. no.	Motortyp Engine type	Bemerkung Comment	OE Germany Teile-Nr. OE Germany Part no.	Referenz Reference
Kolben für Kompressoren / piston for compressor				
1380	D0826... D0834 LF01/02/06 D0834 LFL01-04/40-42/50-55/57/60-68/70/71/75 D0834 LOF01-04 D0834 LOH01-03/40/50-53/60/61/63 D0836 LF01-05/13/15/41/43/44 D0836 LFG01/50-51 D0836 LFL01-06/13/16/40/41/44/50-56/60-71/75-77 D0836 LOH 01-04/10/11/40/41/50-58/60-68/70-76 E0836 LOH	nur Kolben piston only  Ø 85 mm	02 1380 080000	51.54119.6002 81.54119.6040
Zylinderkopf für Kompressoren / cylinder head for compressor				
1320	D0834 LF01/02/06 D0834 LFL01-04/40-42/50-55/57/60-68/70/71/75 D0834 LOF 01-04 D0834 LOH01-03/40/50-53/60/61/63 D0836 LF01-05/13/15/41/43/44 D0836 LFG01/50-51 D0836 LFL01-06/13/16/40/41/44/50-56/60-71/75-77 D0836 LOH01-04/10/11/40/41/50-58/60-68/70-76 E0836 LOH	für Kompressor 1-Zylinder for 1-cylinder compressor  Ø 85 mm mit Ventilplatte with valve plate	02 1320 080003	51.54114.6082
Reparatursatz für Kompressoren / repair kit for compressors				
1322	D0834 LF01/02/06 D0834 LFL01-04/40-42/50-55/57/60-68/70/71/75 D0834 LOF 01-04 D0834 LOH01-03/40/50-53/60/61/63 D0836 LF01-05/13/15/41/43/44 D0836 LFG01/50-51 D0836 LFL01-06/13/16/40/41/44/50-56/60-71/75-77 D0836 LOH01-04/10/11/40/41/50-58/60-68/70-76 E0836 LOH	für Kompressor 1-Zylinder Ø 85 mm Dichtungssatz zu 02 1320 080003 - 51.54114.6082  for compressor 1-cylinder Ø 85 mm gasket-set to 02 1320 080003 - 51.54114.6082	02 1322 080003	51.54100.6042
1322	D0826 LUH... D0836 LOH... D2866 LOH... E0836 LOH	Reparatursatz für Kompressor 2-Zylinder 51.54100.7069 - LK4939 Ø 88 mm, luftgekühlt zu 02 1322 080000 - 81.54124.6029 für Kompressor 2-Zylinder-V Ø 85 mm Dichtungssatz zu 02 1320 080001 - 81.54114.6022  repair kit for compressor 2-cylinder 51.54100.7069 - LK4939 Ø 88 mm, air-cooled to 02 1322 080000 - 81.54124.6029 for compressor 2-cylinder-V Ø 85 mm gasket-set to 02 1320 080001 - 81.54114.6022	02 1322 080001	81.54124.6032
ÖLKÜHLER / OIL COOLERS				
Ölkühler / oil cooler				
1820	D0834 LF01/02/06 D0834 LFL01-04/40-42/50-55/57/60-68/70/71/75 D0834 LOH40/50-53/60/61/63 D0836 LF01-05/13/15/41/43/44 D0836 LFG01/50-51 D0836 LFL01-06/40/41/44/50-56 D0836 LOH40/41/50-58/60-68/70-76	8 Lamellen 8 fins	02 1820 080003	51.05601.0179 51.05601.0173 51.05601.0159
1820	D0824... D0826... D0834 LOH01-05 D0836 LF01-05 D0836 LFG01 D0836 LFL01-06/40/41/44 D0836 LOH01-04/40/41/50-58/60-68/70-76 D0836 LOH40/41/50		02 1820 080000	51.05601.0107 51.05601.0108 51.05601.0118

# spare parts suitable for common rail D0834 / D0836 engines

Pos. Nr. Pos. no.	Motortyp Engine type	Bemerkung Comment	OE Germany Teile-Nr. OE Germany Part no.	Referenz Reference
<b>Ölkühler / oil cooler</b>				
1820	D0834 LF01/02/06 D0834 LFL01-04/40-42/50-55/57/60-68/70/71/75	4 Lamellen 4 fins	02 1820 080002	51.05601.0155 51.05601.0178
<b>WASSERPUMPEN / WATER PUMPS</b>				
<b>Wasserpumpe / water pump</b>				
2000	D0834 LF01/02 D0834 LFL 40-42/50-55/57/60-65 D0834 LOF01/02 D0836 LF13/41/43/44 D0836 LFL40/41/44/50-55/60-65/69-71 D0836 LOH40/41/50	Flügelrad impeller  Ø 135 mm	02 2000 083000	51.06500.6679 51.06500.7064 51.06500.7078 51.06500.9078
2000	D0834 LFL50-55/57 D0834 LOH40/50-53/60/61 D0836 LFG50 D0836 LFL50-55 D0836 LOH51-58/60-68	Flügelrad impeller  Ø 135 mm	02 2000 083001	51.06500.6651 51.06500.6680 51.06500.9079 51.06500.7079
2000	D0834 LFL60-68/70/71/75 D0834 LOH 40/50-53/60/61/63 D0836 LFL60-71/75-77	Flügelrad impeller  Ø 135 mm	02 2000 083002	51.06500.6701 51.06500.9701 51.06500.6691 51.06500.9691
2000	D0836 LOH51-58/60-68	Euro 4/5  Flügelrad impeller  Ø 135 mm	02 2000 083600	51.06500.3267 51.06500.6673 51.06500.6692 51.06500.9673 51.06500.9692
2000	D0836 LFL60-65/69-71	Flügelrad impeller  Ø 135 mm	02 2000 083601	51.06500.6674 51.06500.9674 51.06501.3267
2000	D0834 LFL01-04 D0834 LOH01-03 D0836 LF01-05 D0836 LFL01-06 D0836 LOH01-04 D0836 LFG01	Flügelrad impeller  Ø 125 mm	02 2000 083602	51.06500.6669 51.06500.6606 51.06500.9606 51.06500.6612 51.06500.9612 51.06500.9669
2000	D0836 LUH01/02 D0836 LUH40/41/50	Flügelrad impeller  Ø 136 mm	02 2000 083603	51.06500.6587 51.06500.9587
<b>Reparaturatz für Wasserpumpen / repair kit for water pump</b>				
2010	D0834 LF01/02 D0834 LFL 40-42/50-55/57/60-65 D0834 LOH40/50-53/60/61 D0834 LOF01/02 D0836 LF13/41/43/44 D0836 LFL40/41/44/50-55/60-65/69-71 D0836 LFG50 D0836 LOH40/41/50-58/60-68	für Wasserpumpe for water pump  02 2000 083000 - 51.06500.6679 02 2000 083001 - 51.06500.6680 02 2000 206601 - 51.06500.6646  Flügelrad impeller Ø 135 mm	02 2010 080000	
2010	D0826... D0834 LF01/02/06 D0834 LFL01-04/40-42/50-55/57/60-68/70/71/75 D0834 LOF01-04 D0834 LOH01-03/40/50-53/60/61/63 D0836 LF01-05/13/15/41/43/44 D0836 LFG01/50-51 D0836 LFL01-06/13/16/40/41/44/50-56/60-71/75-77 D0836 LOH 01-04/10/11/40/41/50-58/60-68/70-76 E0836 LOH	für Wasserpumpe for water pump  02 2000 083603 - 51.06500.6587  Flügelrad impeller  Ø 136 mm	02 2010 080001	
<b>DICHTUNGSSÄTZE / GASKET SETS</b>				
3000	D0834...	Dichtungssatz, Motor mit Wellendichtring mit Ventilschaftdichtung  gasket set, engine with shaft seal with valve stem seal	02 3000 083400	51.00900.6720

**HERAUSGEBER / PUBLISHERS:**

OE Germany Handels GmbH  
Fritz-Müller-Straße 100-104  
73730 Esslingen am Neckar  
Germany

Phone +49 (0) 711 627698-0  
Fax +49 (0) 711 627698-51

info@oe-germany.de  
www.oe-germany.com

**Sitz der Gesellschaft / Headquarters:** Esslingen am Neckar  
**Amtsgericht Stuttgart / Stuttgart District Court:** HRB 730378  
**Umsatzsteuer-Identifikationsnummer gemäß § 27a / Value added tax identification number acc. to § 27a:**  
DE 266 137 673  
**Geschäftsführer / Managing Director:**  
Mario Jahn (CEO), Thomas Schechinger (CFO)

**Verantwortlich für den Inhalt / Responsible for contents:** OE Germany Handels GmbH  
**Design & Realisation / Design & implementation:** OE Germany Handels GmbH

**ALLGEMEINE INFORMATIONEN:**

Es gelten unsere Allgemeinen Geschäftsbedingungen, die unter [www.oe-germany.com/de](http://www.oe-germany.com/de) veröffentlicht sind oder Ihnen auf Anfrage vorgelegt werden können.

Bezeichnungen, Originalteilenummern, Motorentypen, Fahrzeugdaten oder andere Daten bezüglich Motoren-, Fahrzeug- oder anderen Herstellern werden ausschließlich zu internen Vergleichszwecken aufgeführt.

**GENERAL INFORMATION:**

Our General Terms and Conditions of Business published under [www.oe-germany.com/en](http://www.oe-germany.com/en) shall apply and will be supplied on request.

Designations, original part numbers, engine types, vehicle characteristics or other data relating to engine, vehicle or other manufacturers are exclusively quoted for internal purposes of comparison.



**OE Germany Handels GmbH**  
Fritz-Müller-Straße 100-104  
73730 Esslingen am Neckar  
Germany

Phone +49 (0) 711 627698-0  
Fax +49 (0) 711 627698-51

[info@oe-germany.de](mailto:info@oe-germany.de)

[www.oe-germany.com](http://www.oe-germany.com)